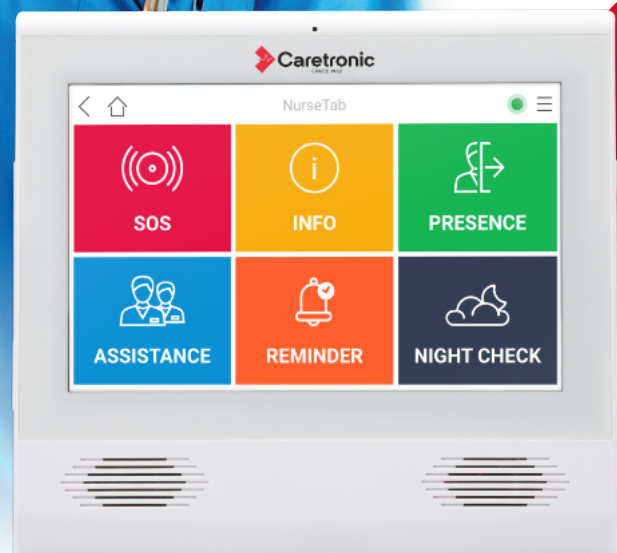


NurseTab room terminal

Art.: ERTH0001-5

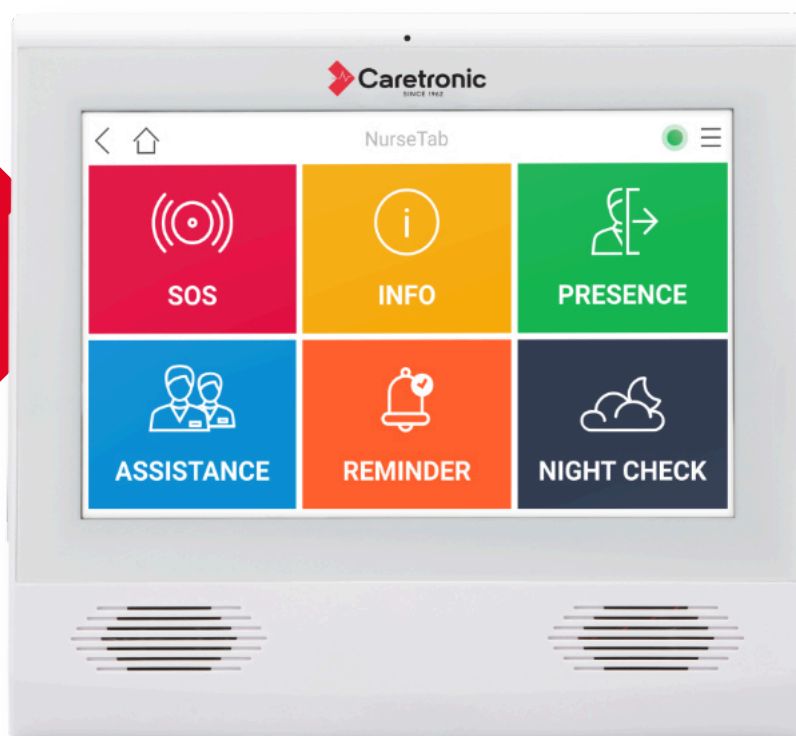


NurseTab room terminal

Art.: ERTH0001-5



**PATENTED
SOLUTION
(European
patent)**



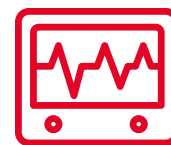
DESCRIPTION:

Professional next generation room terminal NurseTab is the most modern "touch" room terminal for use in healthcare. It includes NurseTab software and has possibility of remote access and programming. It can be mounted on wall or ceiling.

POSSIBILITY OF FUNCTIONALITY:

- ▶ presence acknowledgment and registering of staff
- ▶ triggering and registering of assistance call for staff
- ▶ marking and registering of night rounds of staff
- ▶ review of active calls from nurse call system
- ▶ registering care and nursing
- ▶ establishing voice communication
- ▶ establishing video conference
- ▶ ordering meals
- ▶ review of upcoming events and activities
- ▶ managing, adding and review of past activities for individual resident / patient (for relatives)
- ▶ possibility of adding additional functionalities

Special healthcare features:



Medical grade device



Patented in
EU



Manufactured under
ISO 9001
Certification



Antimicrobial certification
according to
ISO22196



10+
Years lifespan



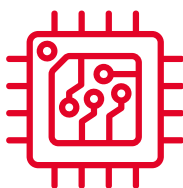
Standard warranty
1 year
Extended warranty up to
5 years



Professional product for
use in healthcare
environment



Certification for safety
according to
DIN VDE 0834



Long-life product
assembled of high-quality
components



Tested with all major
disinfection cleaners used
in healthcare



Low voltage
power supply
24 V



Special speaker and
microphone for long
distance communication



Built-in hardware watch-
dog to guarantee
24/7
use of device

Technical specification:

System

- ▶ Octa-core processor, 1.8G
- ▶ RAM: 2GB DDR3
- ▶ Internal memory: 16GB

Display

- ▶ Touch panel: 10 points capacitive touch screen.
- ▶ Panel: 8"LCD IPS panel
- ▶ 9H screen protection material
- ▶ Resolution: 1280*800
- ▶ Contrast ratio: 1200:1
- ▶ Luminance: 500cdm
- ▶ Aspect Ratio: 16:9

Network

- ▶ WiFi 802.11ac/b/g/n
- ▶ Ethernet (POE)
- ▶ Bluetooth 5.0

Others

- ▶ Speaker: 2*3W
- ▶ Microphone
- ▶ Camera (optional)
- ▶ Language: Multi-language

Input/Output ports

- ▶ Micro USB, USB, HDMI out, RJ45, RS485, DC in.

Power supply

- ▶ 24V, 1A power supply.
- ▶ Or PoE.

Dimensions

- ▶ W:21.3cm / H: 19.3cm / D:2.8cm

Weight

- ▶ 550g

-
- ▶ Compliant and tested with CE certification requirements
 - ▶ Compliant and tested with DIN VDE 0834 requirements



Caretronic d. o. o.

Štirnova 8,
SI-4000 Kranj
Slovenia

T +386 4 2350 350

E info@caretronic.com

www.caretronic.com